



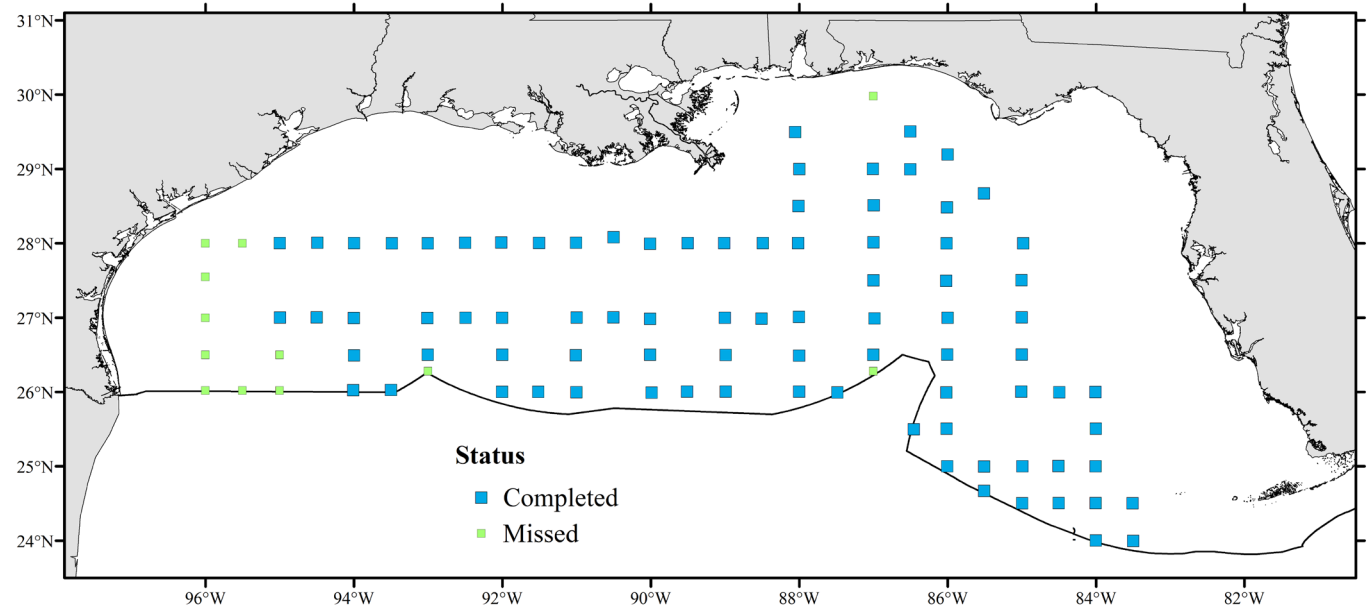
NOAA
FISHERIES

NOAA Fisheries – 2023 SEAMAP Surveys

Fall SEAMAP Meeting
October 17, 2023

Spring Plankton

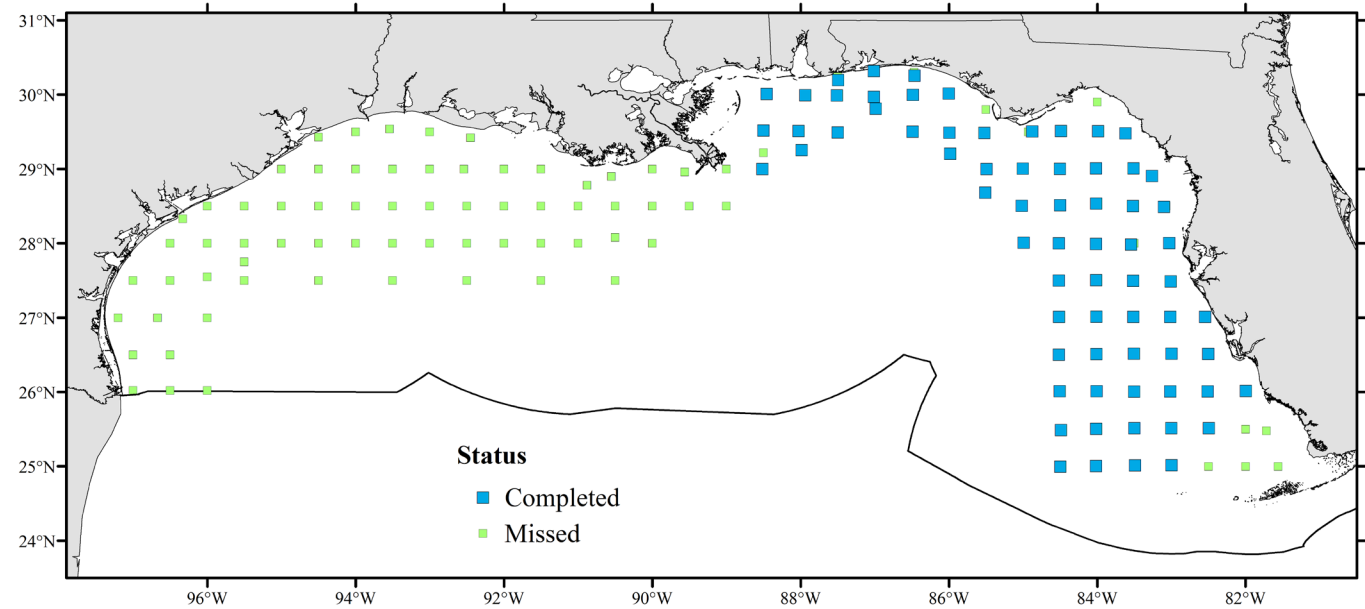
- Completed 85 stations
 - Bongo – 85
 - Neuston – 74
 - Shallow Bongo – 85
- Lost 7 DAS (days at sea)
- Missed out on additional sampling opportunities
 - MOCNESS
 - Adaptive sampling for close kin (based on satellite imagery)



Fall Plankton

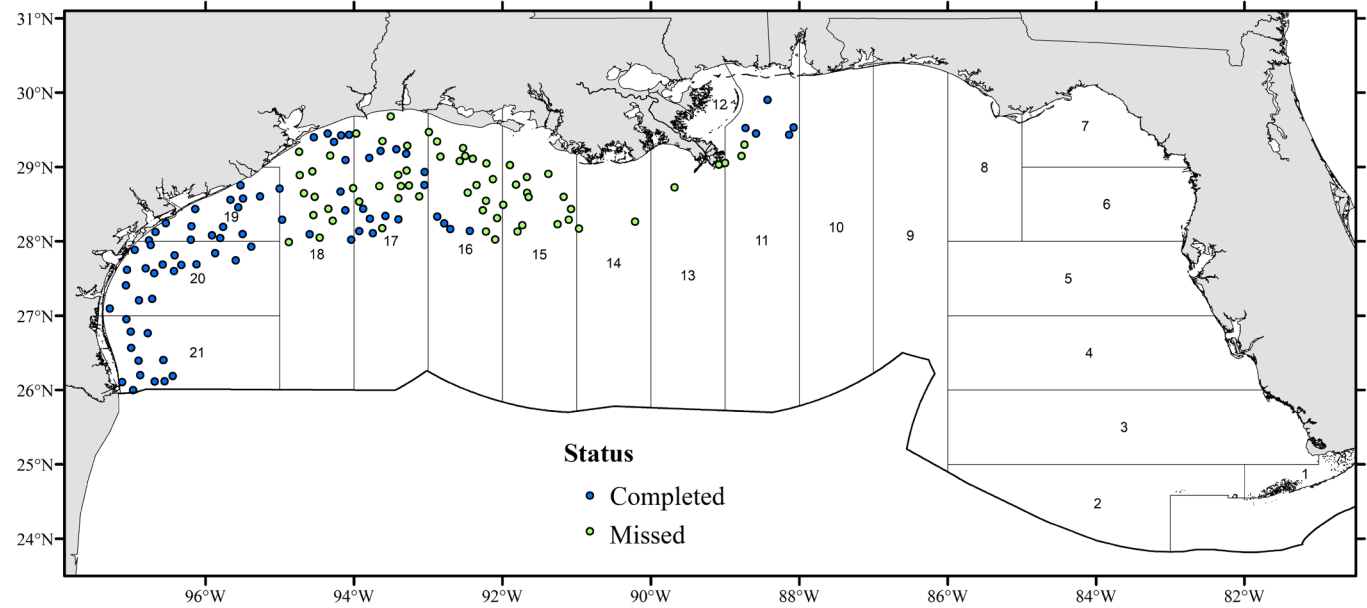


- Completed 69 stations
 - Bongo – 81
 - Neuston – 74
 - Shallow Bongo – 25 (close kin)
- Additional bongo tows for microplastics
- Additional water samples for eDNA – HAB species
- Collected CUFES – metabarcoding project with USF
- Lost 15 DAS



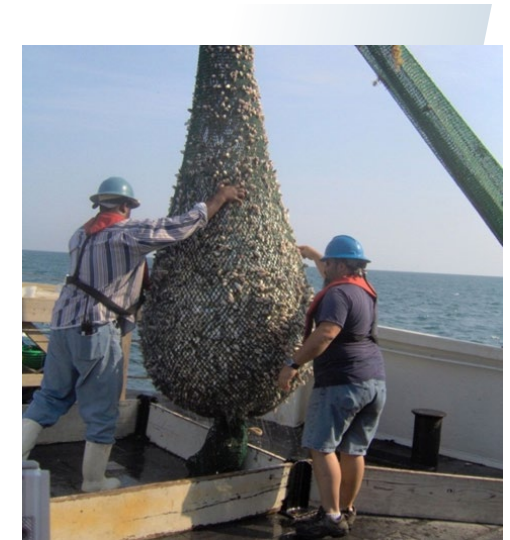
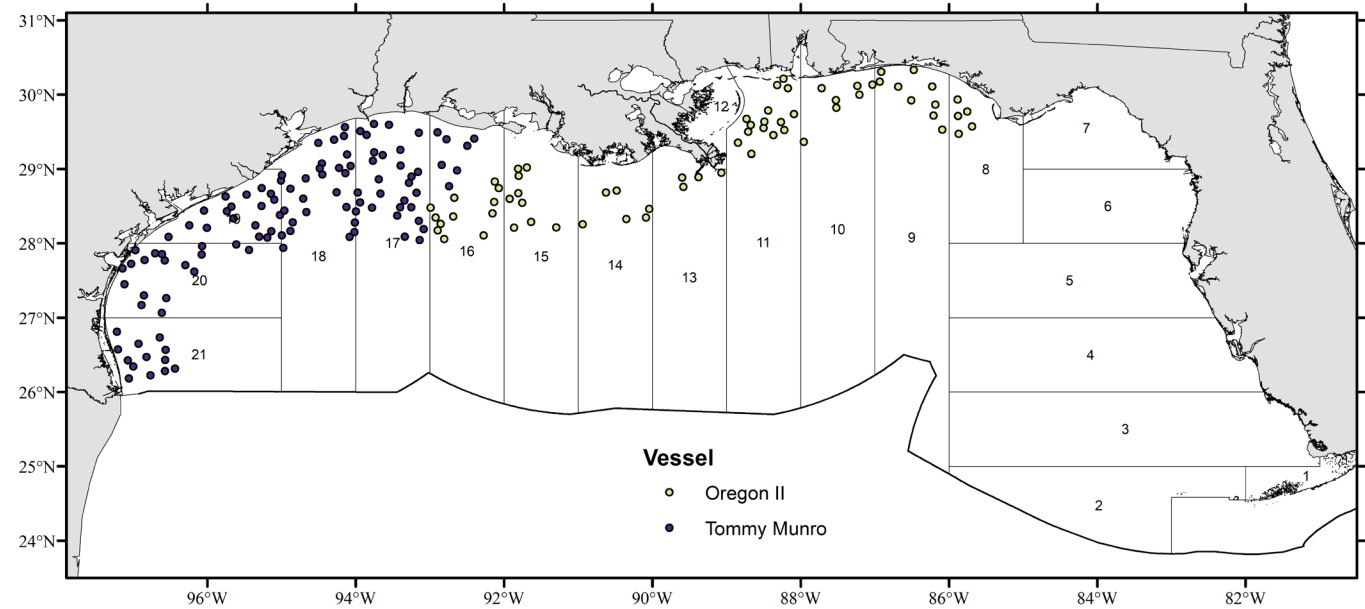
Fall Groundfish (22)

- Completed 78 stations
- 87,316 individuals
 - 15,479 measurements
- Lost 16 DAS
- Collected species for age and growth, graduate program work, external requests

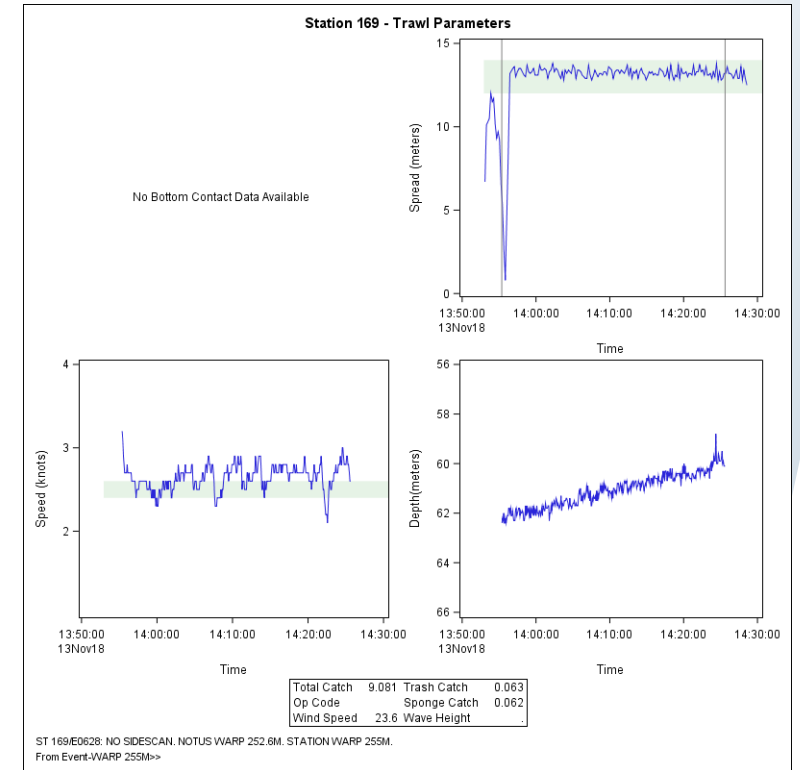
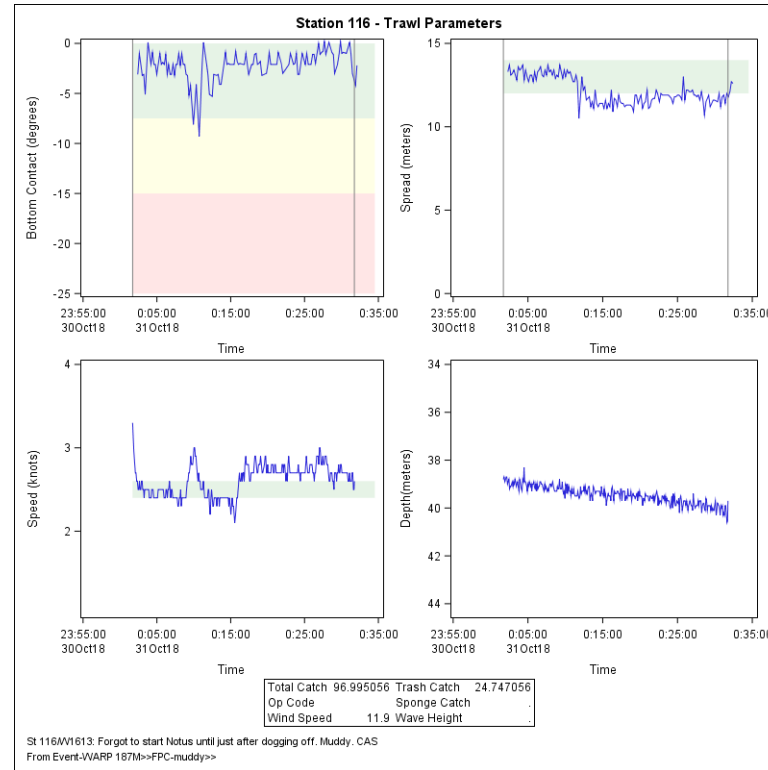
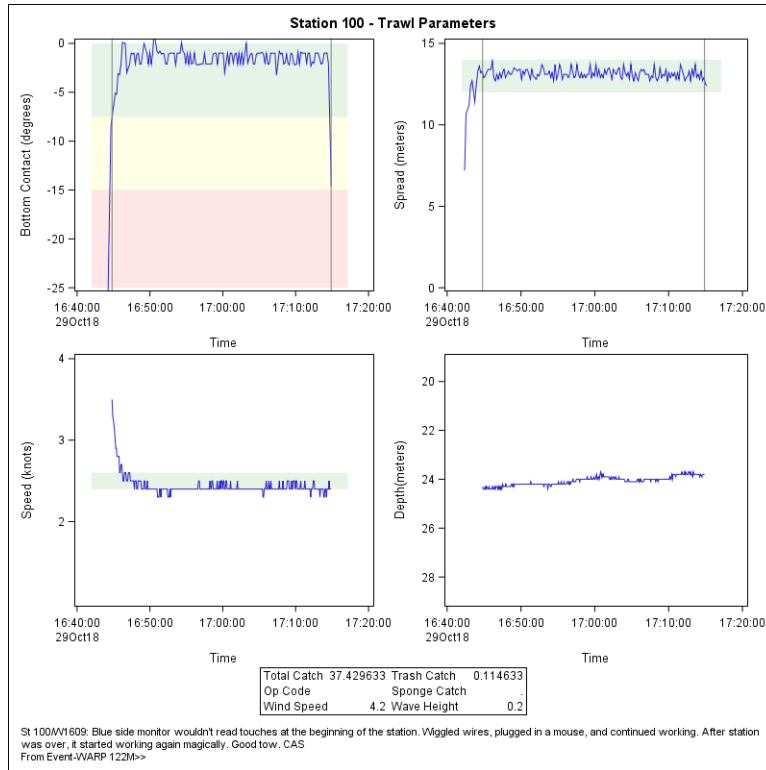


Summer Groundfish

- Completed 183 stations
 - Oregon II – 69
 - Tommy Munro – 114
- 208,464 individuals
 - 36,674 measurements
- Lost 21 DAS on Oregon II
 - Increased cost for charter
 - No sampling during Texas Closure
- Collected species for age and growth, graduate program work, external requests



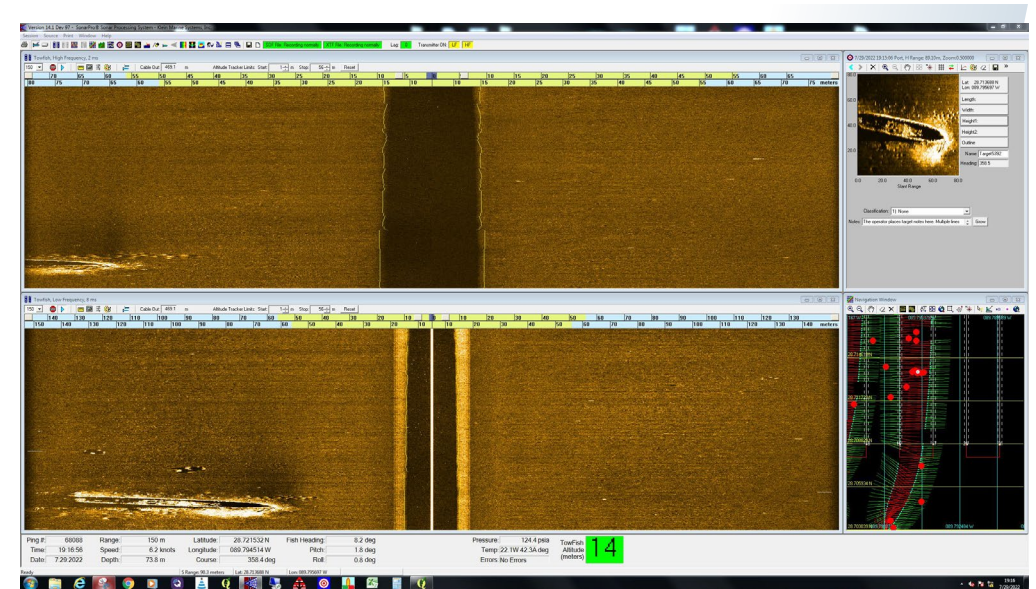
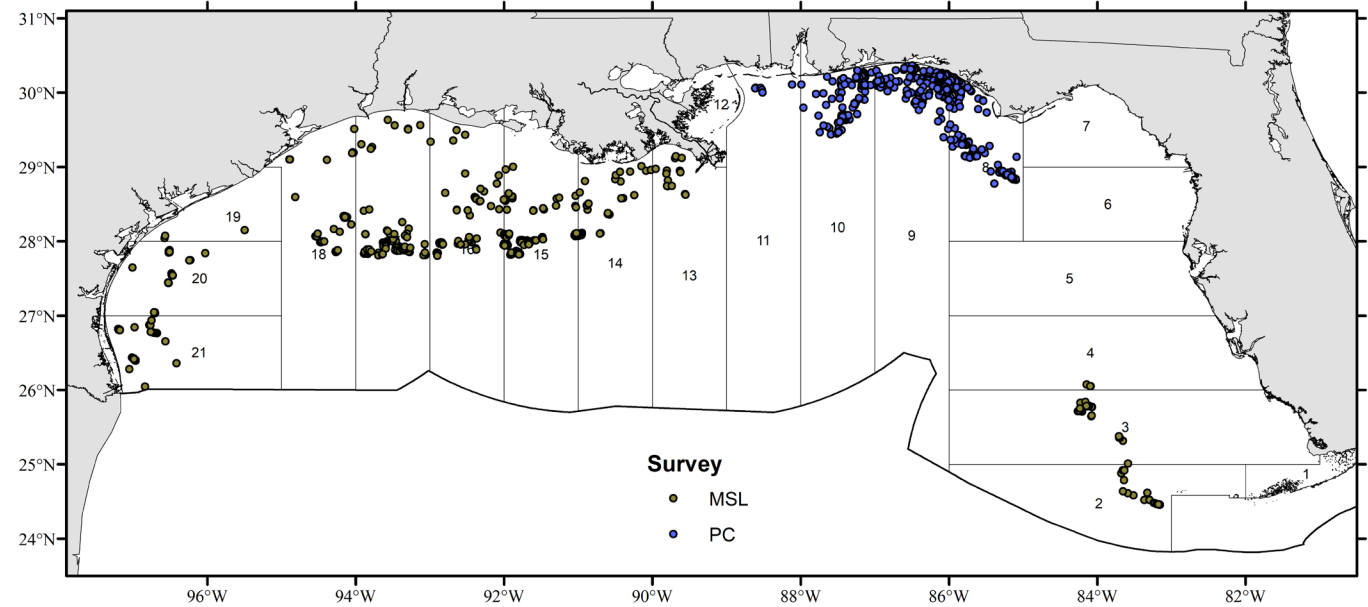
Groundfish Survey - NOTUS



- How do we evaluate?
- How do we compare with data FWC is collecting?

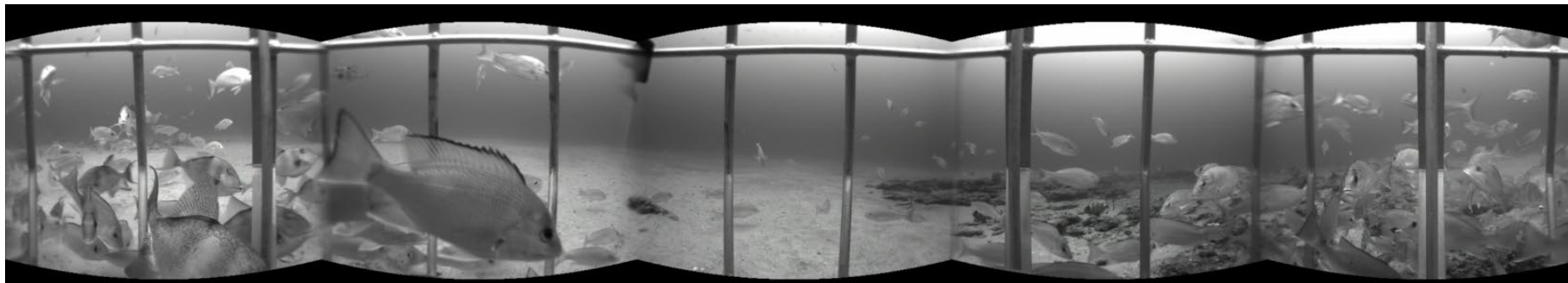
Reef Fish Survey

- Completed 996 drops
 - MSL – 546
 - PC – 450
- eDNA – 103 samples collected
- Mapping – 1250 linear nm



Continued Work

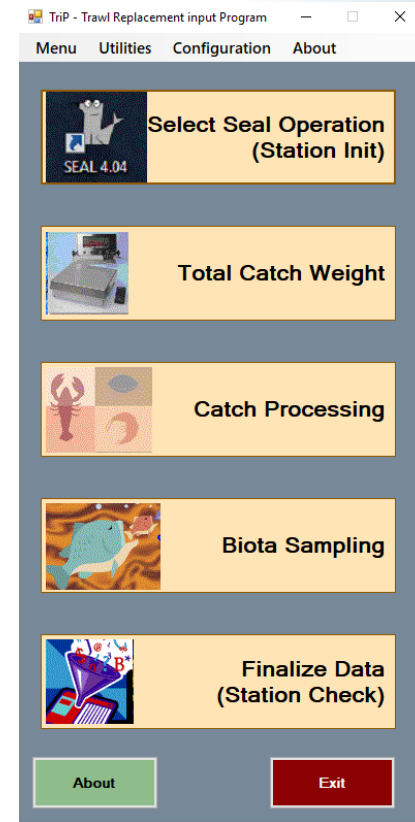
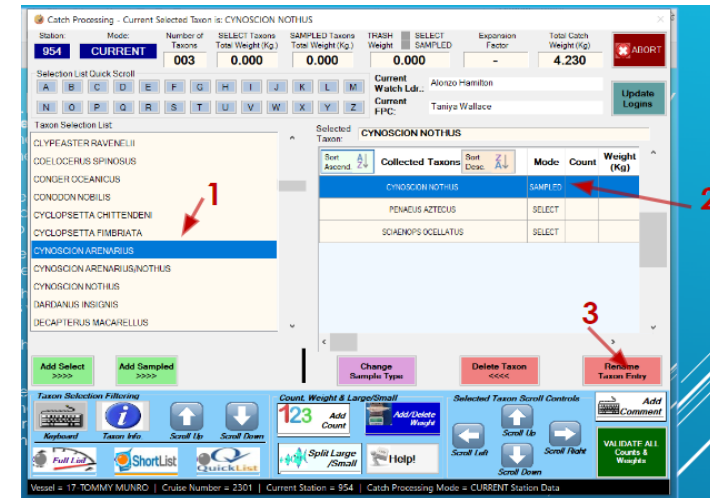
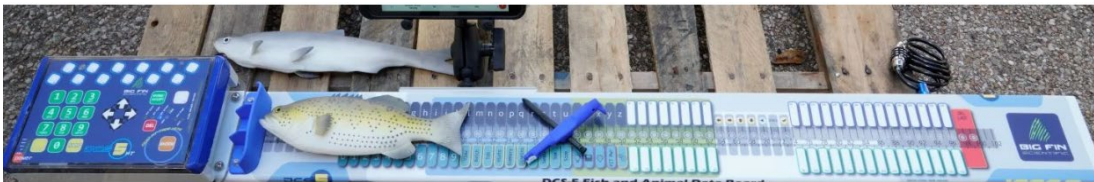
- QA/QC of plankton samples
- Groundfish species verification
 - Summer 2023
 - Fall 2023
- Video reads, measurements, and mapping



NOAA
FISHERIES

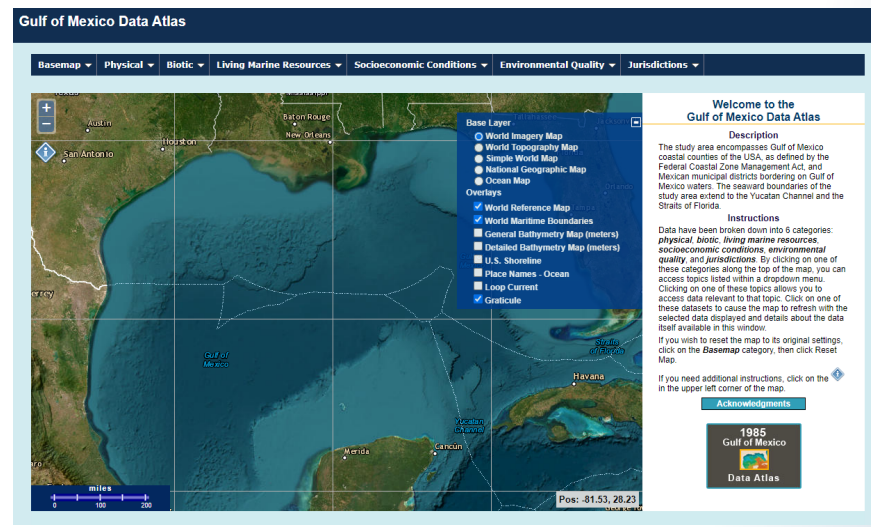
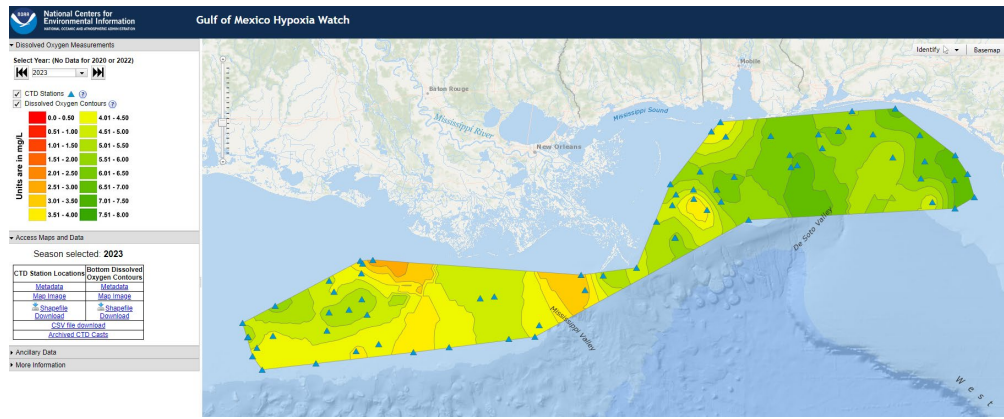
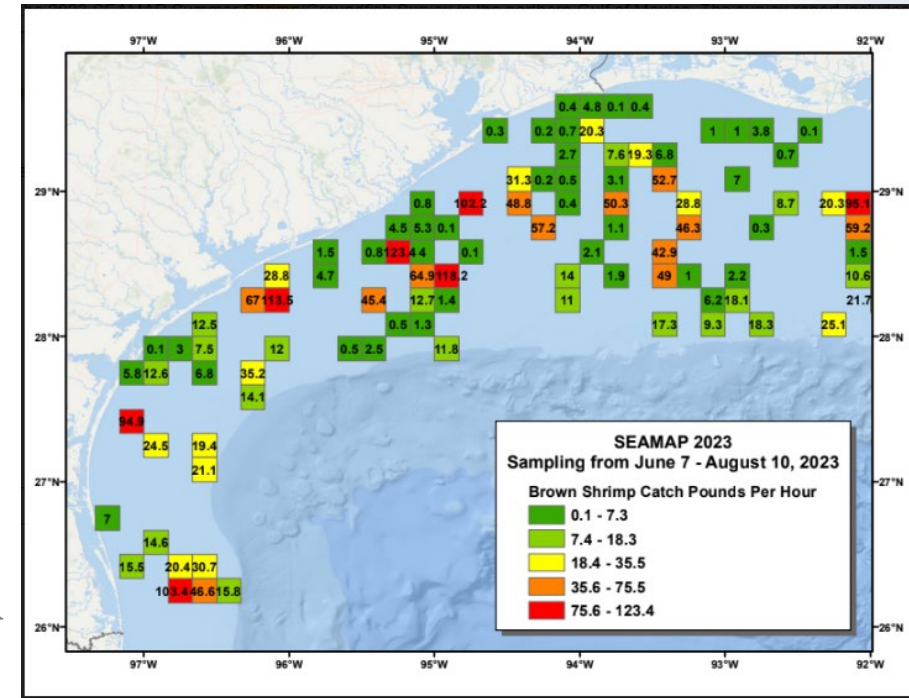
TRiP Training Workshop

- Held training for all SEAMAP Partners on new data entry program (TRiP)
- Evaluation of BigFin Scientific length boards
- Provided program to all partners for sample collections



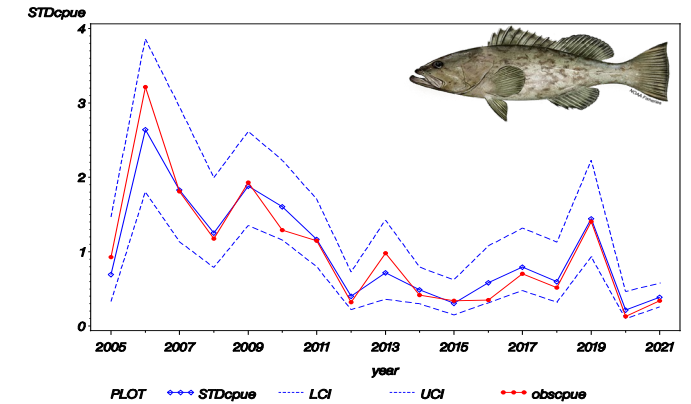
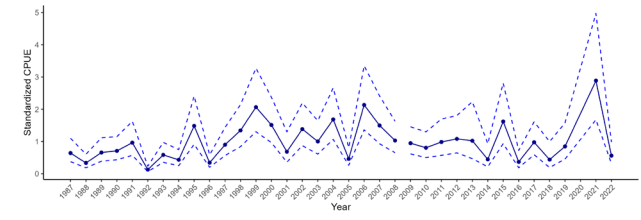
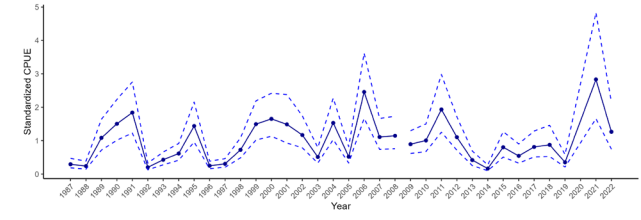
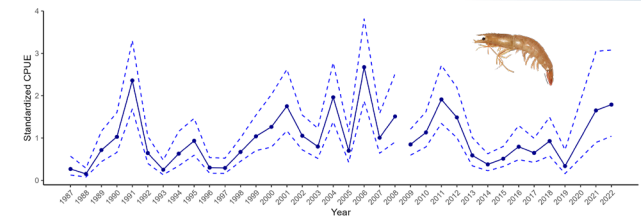
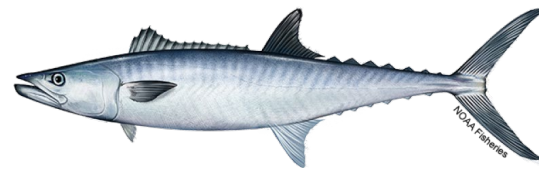
Data Contributions

- Environmental data to NCEI
 - Hypoxia Watch
 - Global Temperature and Salinity Profile Program
- Shrimp real time data
- Gulf of Mexico Data Atlas



Stock Assessments - SEDAR

- SEDAR 87 – brown, pink, and white shrimp
- Spanish mackerel update (groundfish)
- Yellowedge grouper length and age comps (groundfish)
- King mackerel update (groundfish and fall plankton)
- Gag grouper update (PC portion of video survey)



Questions?



NOAA
FISHERIES